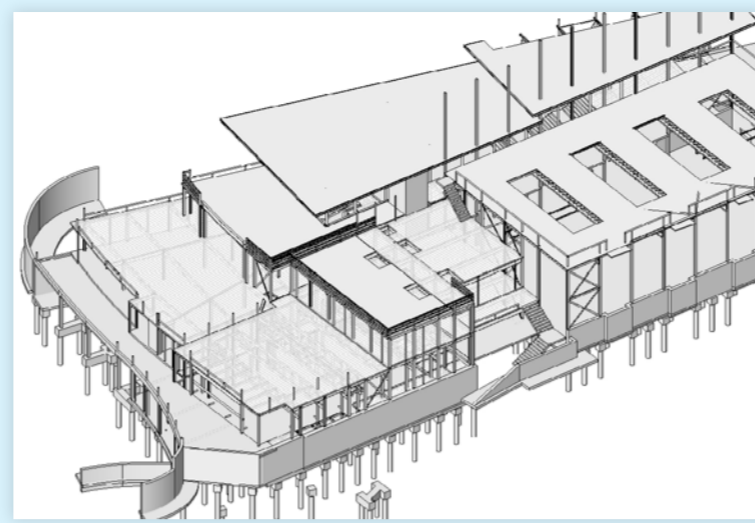




Oakham CofE Primary - Courtyard & Library

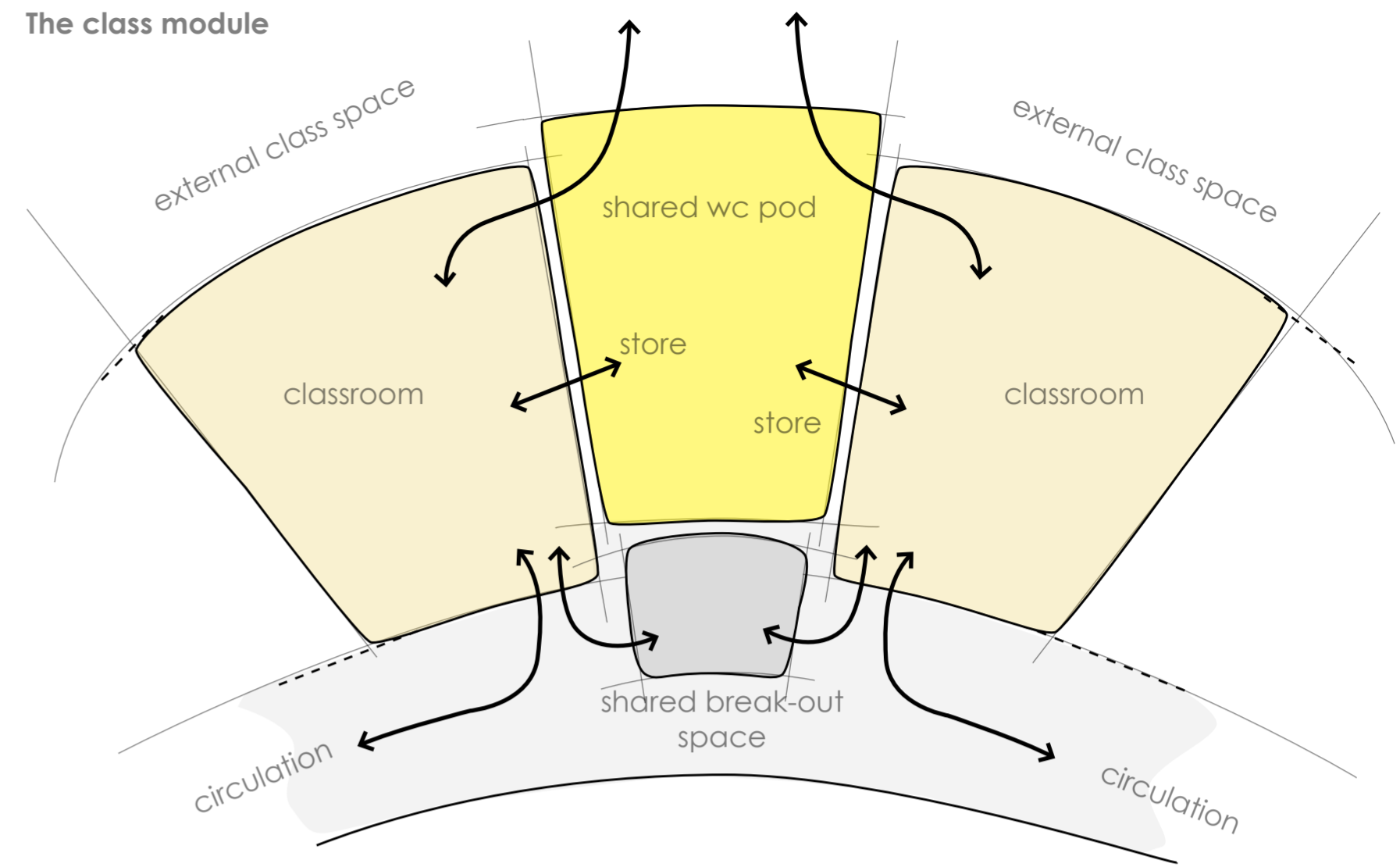


Oakham CofE Primary - Front Entrance



Hayesfield Girls' School - Revit Structures

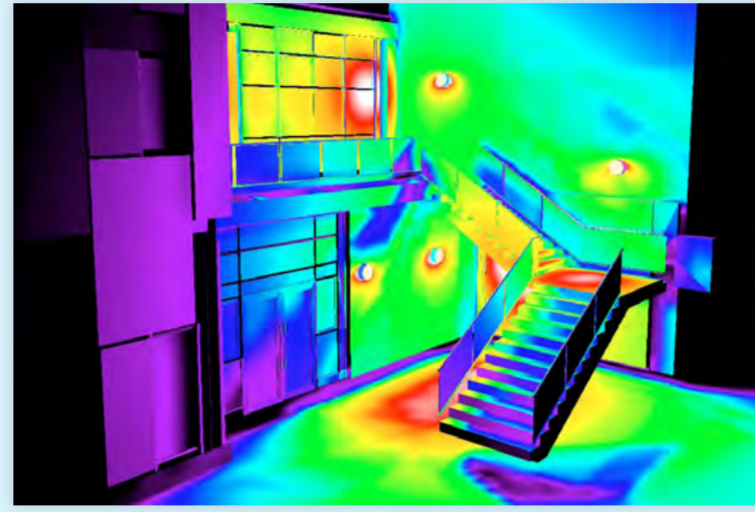
The class module



Oakham CofE Primary - Hall

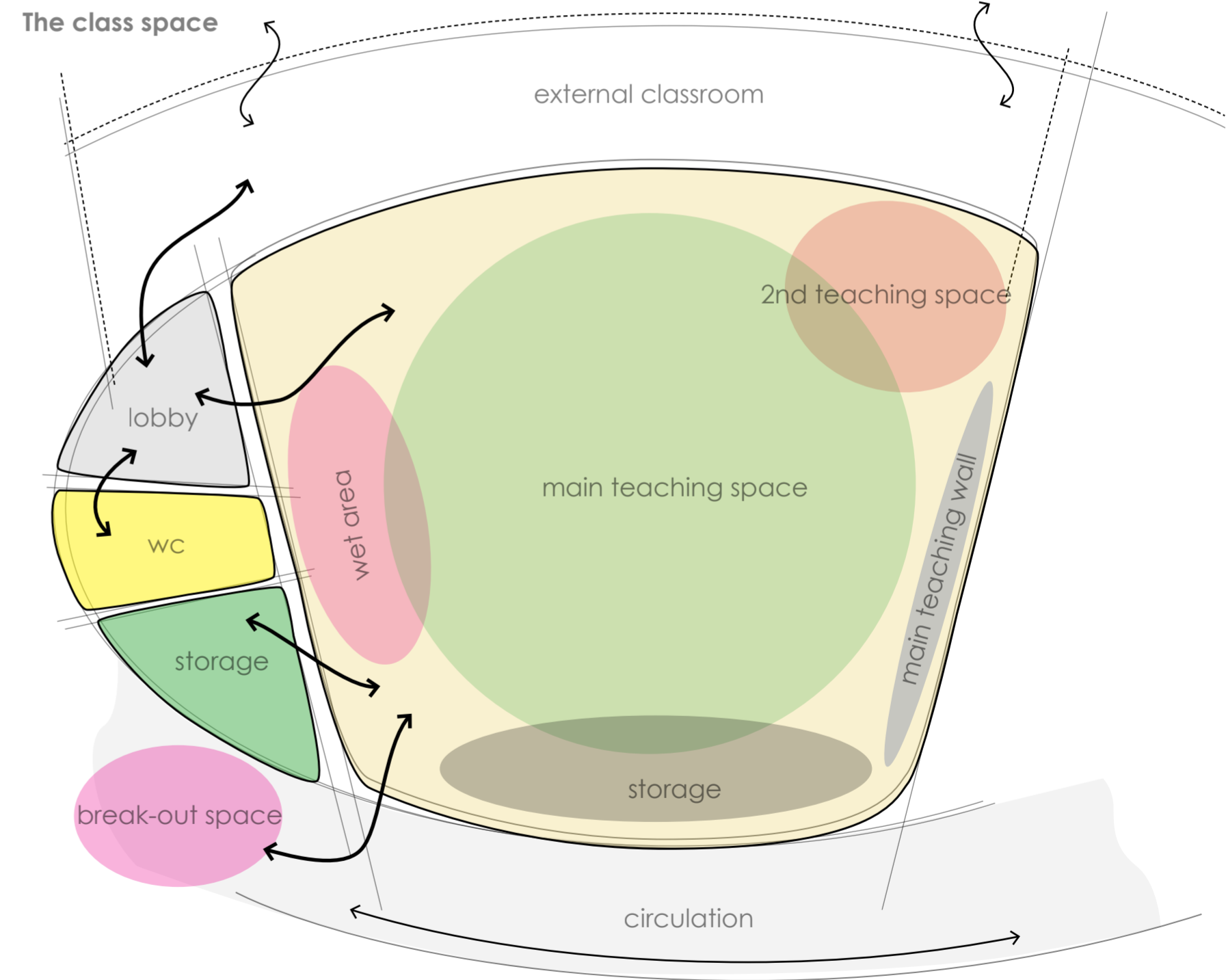


Hayesfield Girls' School - North Elevation



Hayesfield Girls' School - lighting design

The class space



Ystrad Mynach Phase 1



Princess Royal Centre, Guernsey



Hayesfield Girls' School - Revit CGI (2yr prior)



Le Rondin Guernsey - main entrance



Highbury College - reception



Hayesfield Girls' School - photograph (2yr later)

BIM

Fundamentals



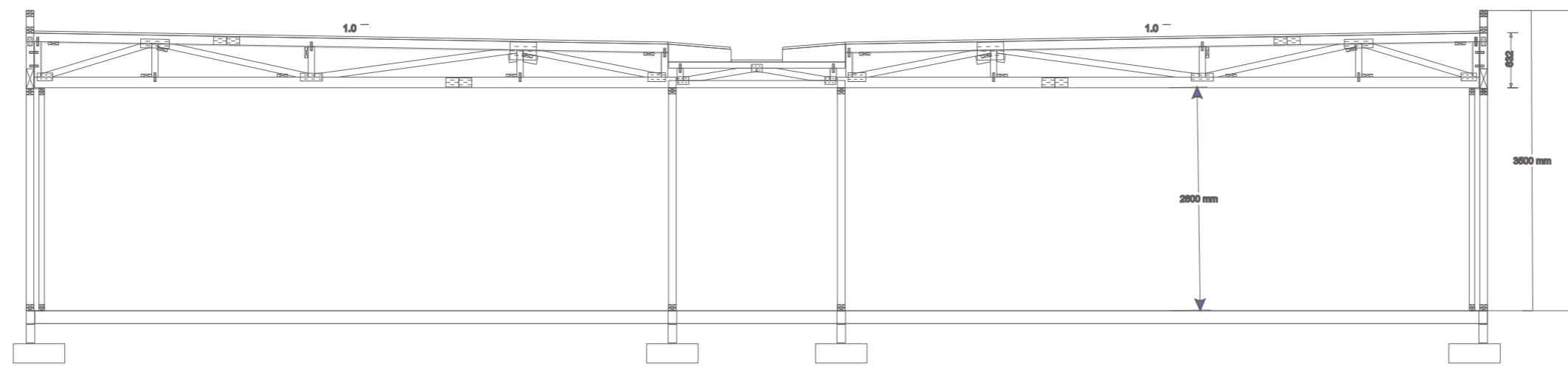
Hall frame



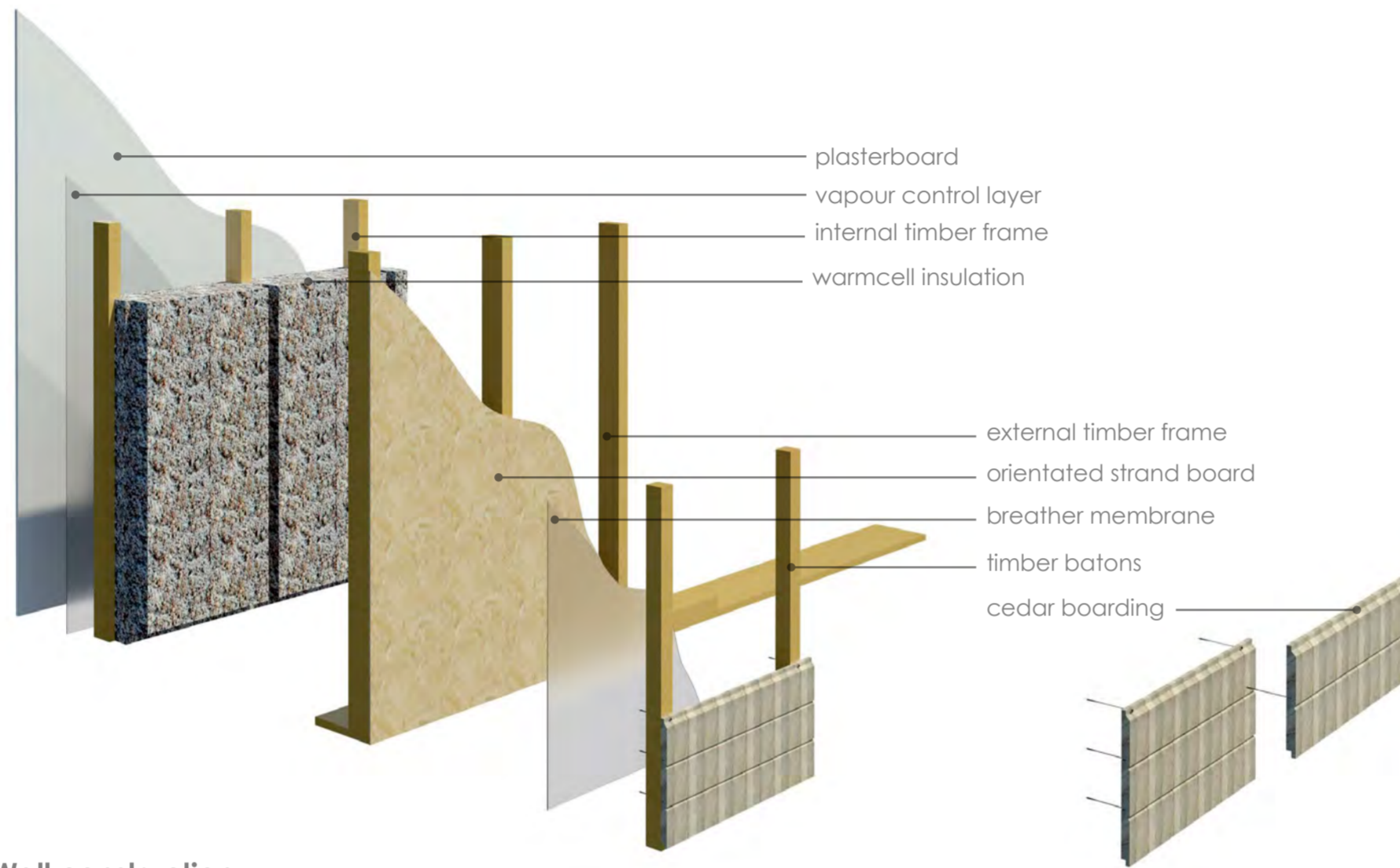
Roof panels



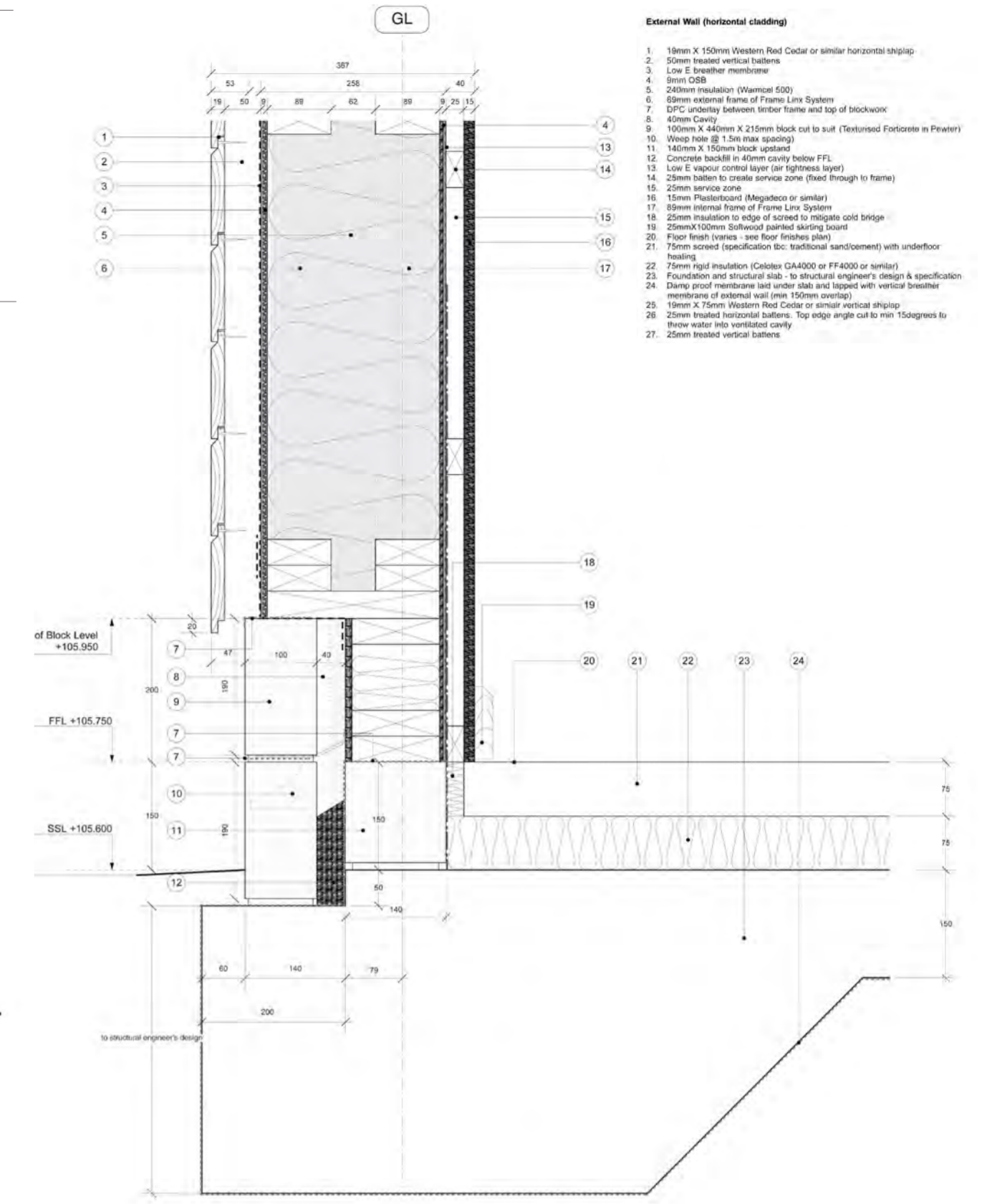
Wall plinth Construction



Section - typical structural section | twin timber frame

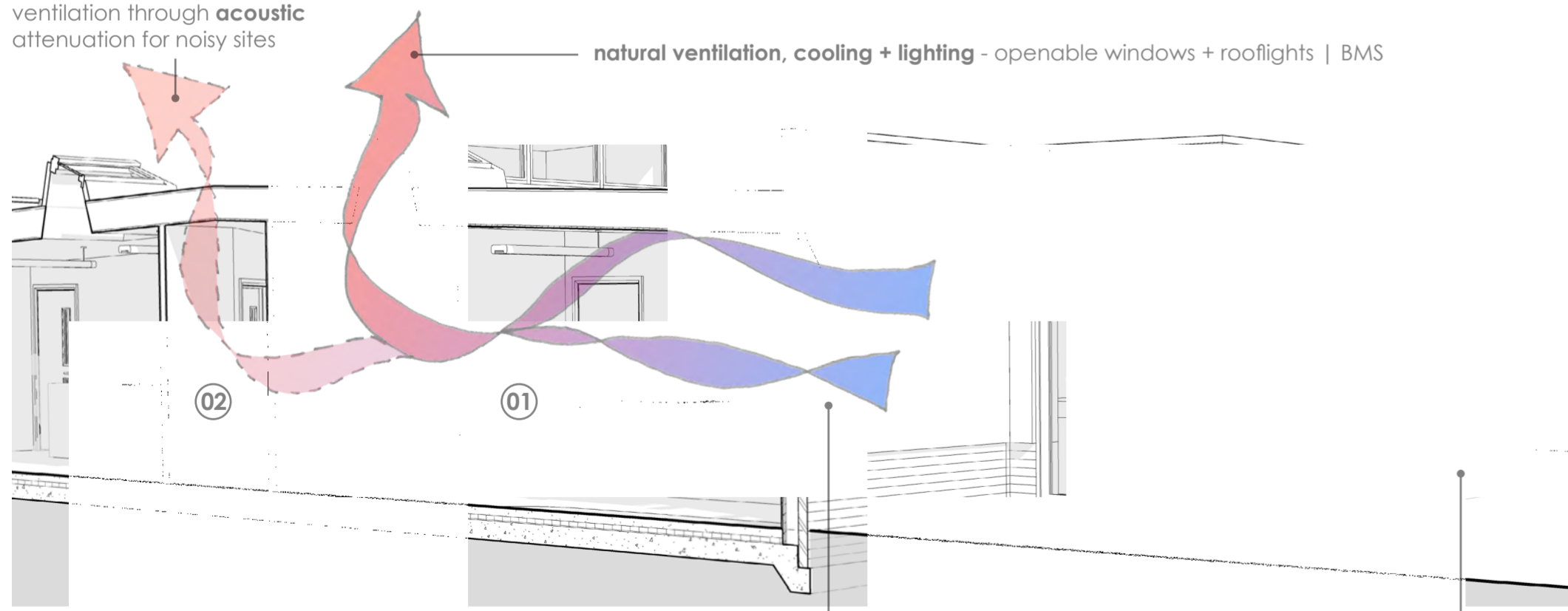


Wall construction



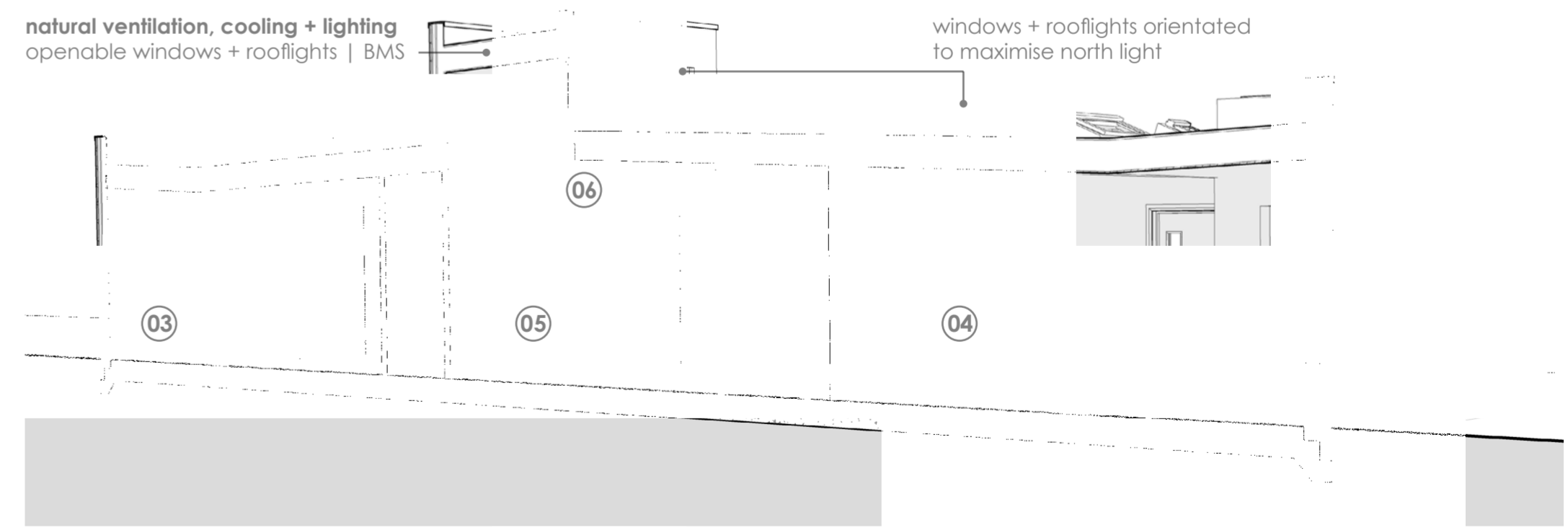
Detail - typical external wall base section

ventilation through acoustic attenuation for noisy sites



Section - typical classroom

natural ventilation, cooling + lighting openable windows + rooflights | BMS



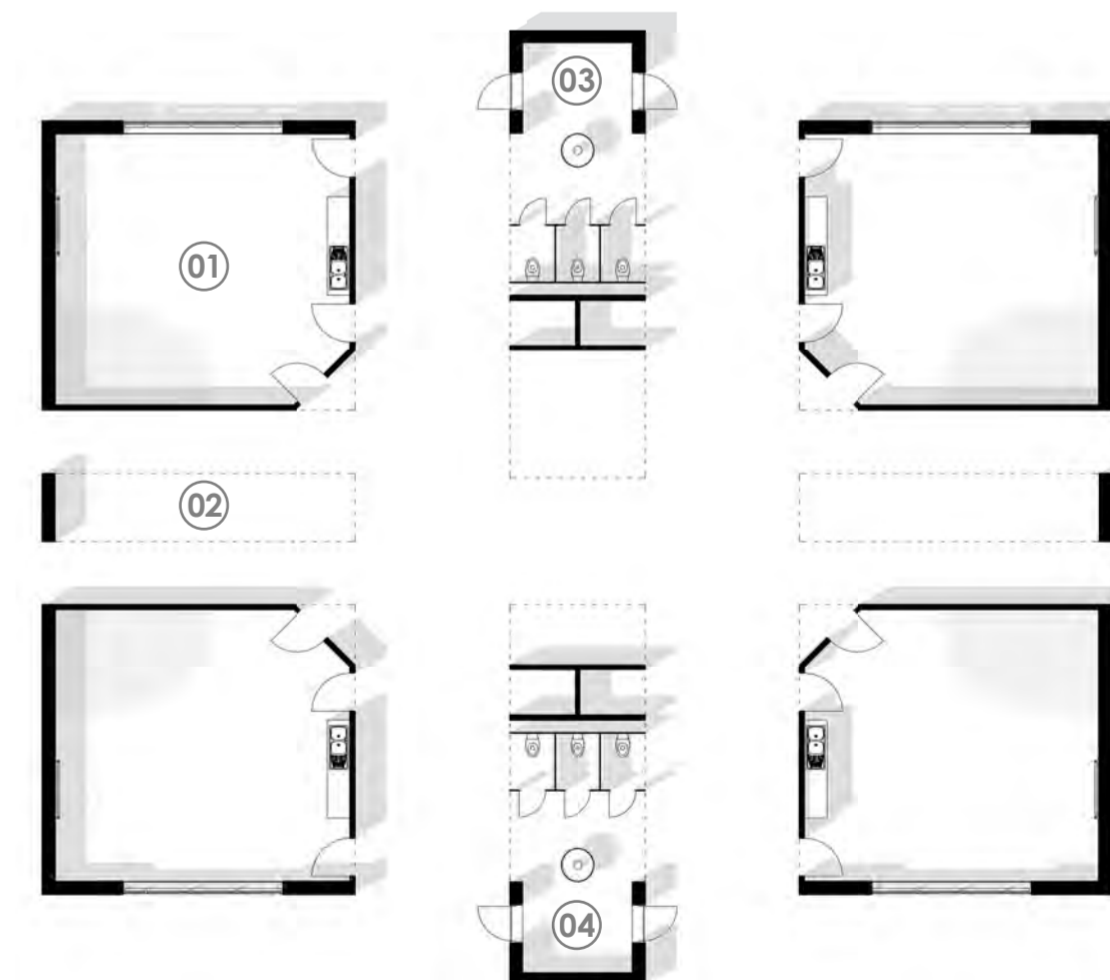
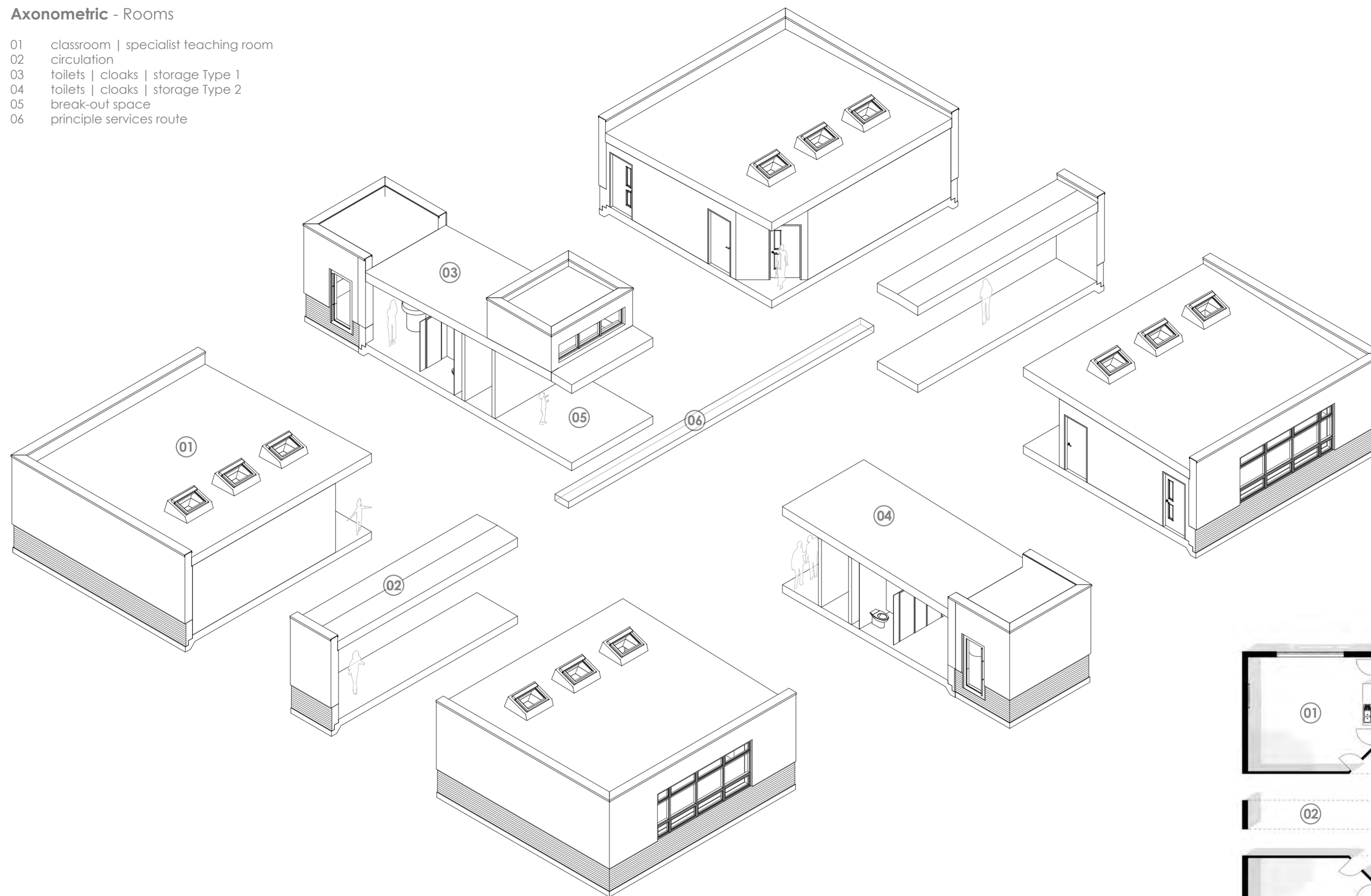
Section - typical toilets | break-out | cloaks | storage

Kit of parts - modular | panelised | pre-fab construction

aww SKANSKA

Axonometric - Rooms

- 01 classroom | specialist teaching room
- 02 circulation
- 03 toilets | cloaks | storage Type 1
- 04 toilets | cloaks | storage Type 2
- 05 break-out space
- 06 principle services route

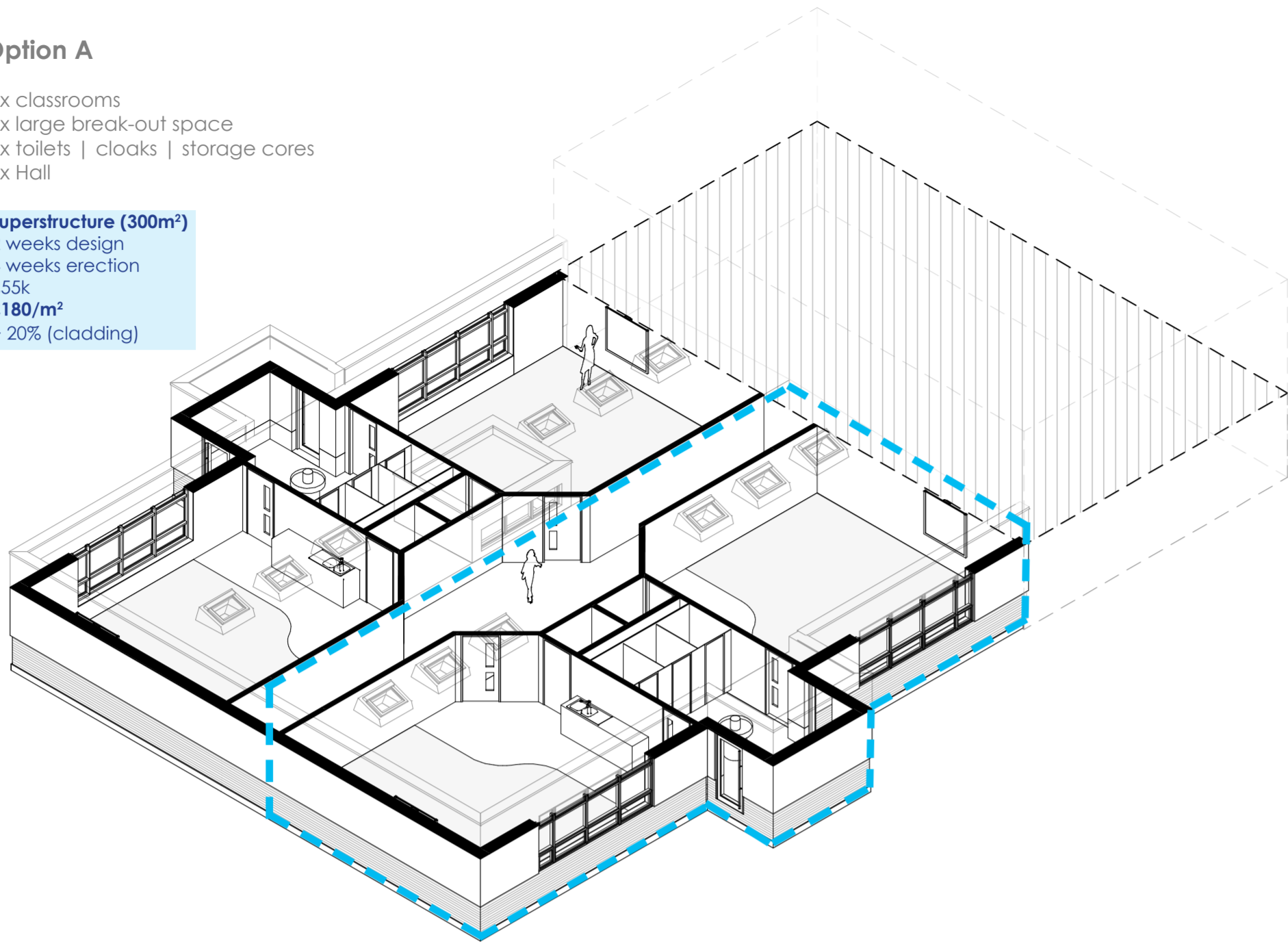


Plan - Rooms 1:200

Option A

- 4 x classrooms
- 1 x large break-out space
- 2 x toilets | cloaks | storage cores
- 1 x Hall

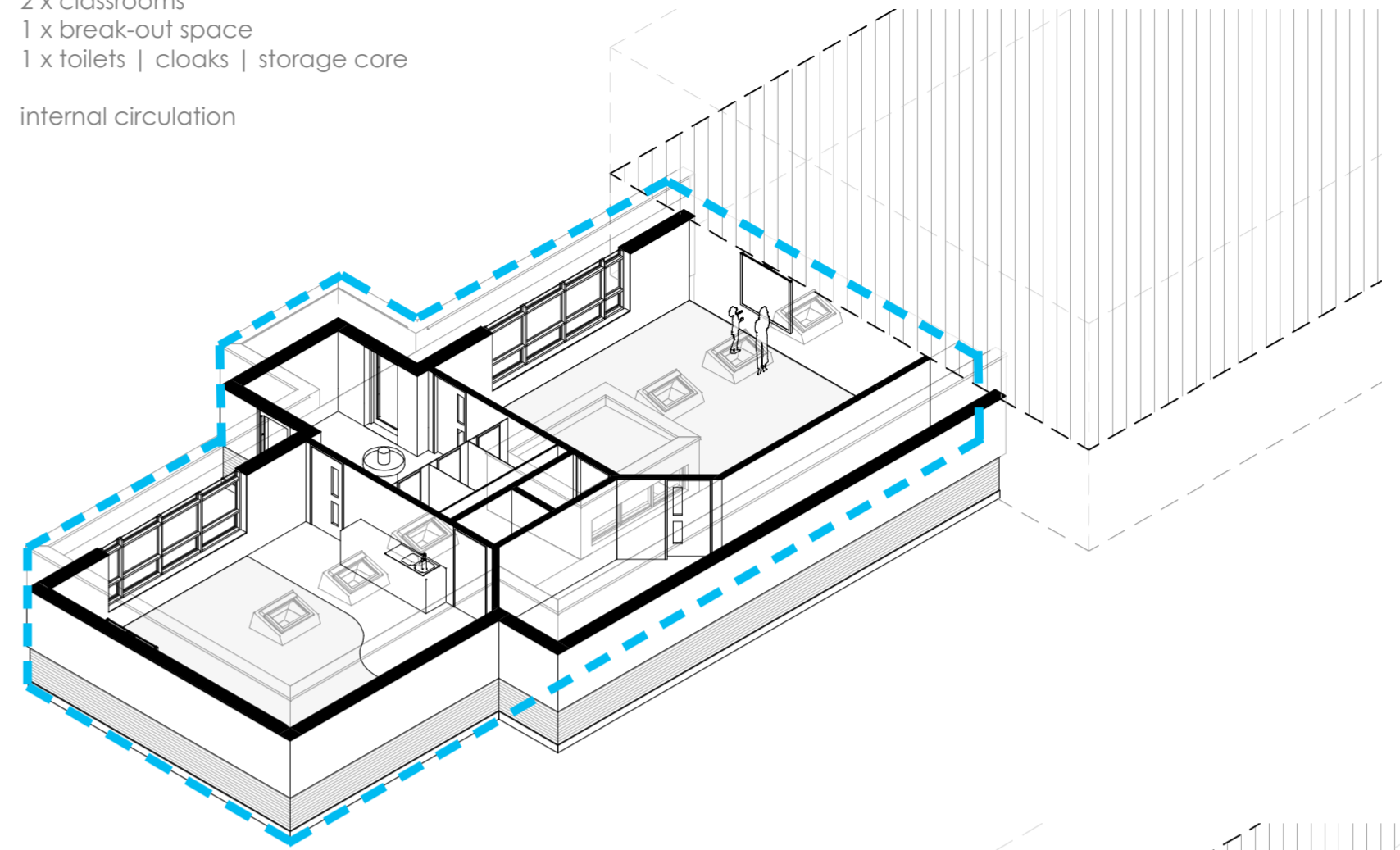
superstructure (300m²)
2 weeks design
4 weeks erection
£55k
£180/m²
+ 20% (cladding)



Option B

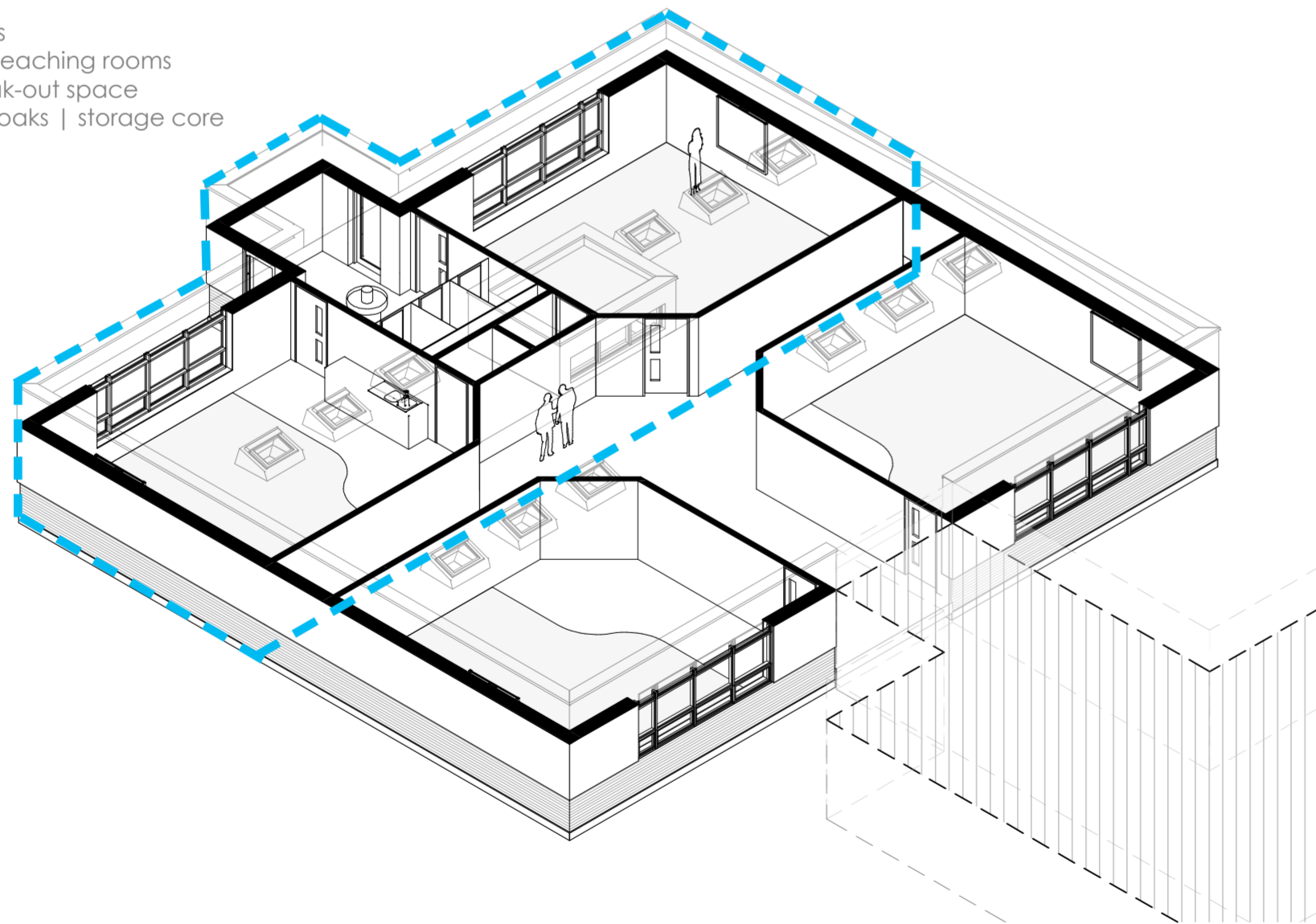
- 2 x classrooms
- 1 x break-out space
- 1 x toilets | cloaks | storage core

internal circulation



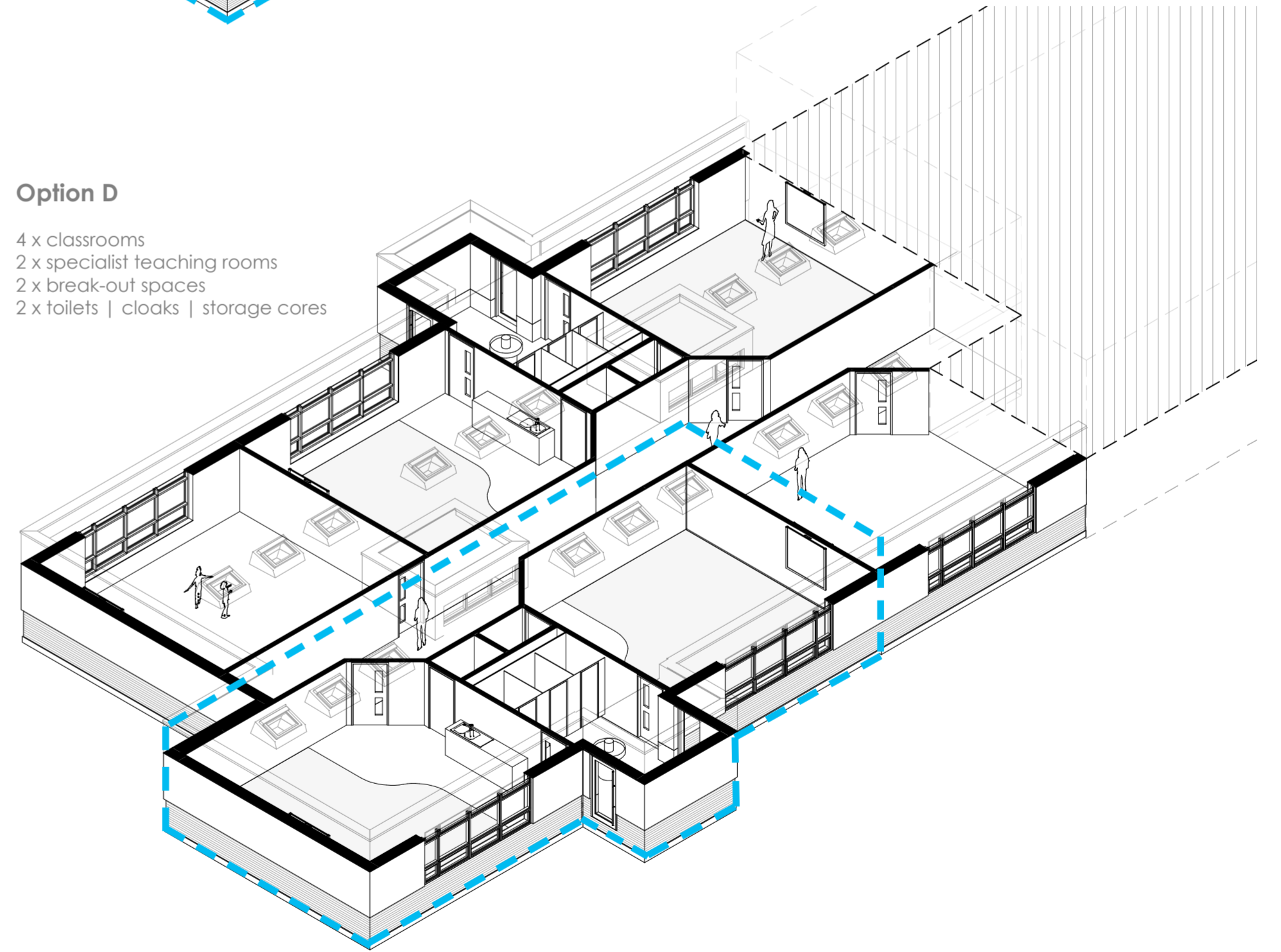
Option C

- 2 x classrooms
- 2 x specialist teaching rooms
- 1 x large break-out space
- 1 x toilets | cloaks | storage core



Option D

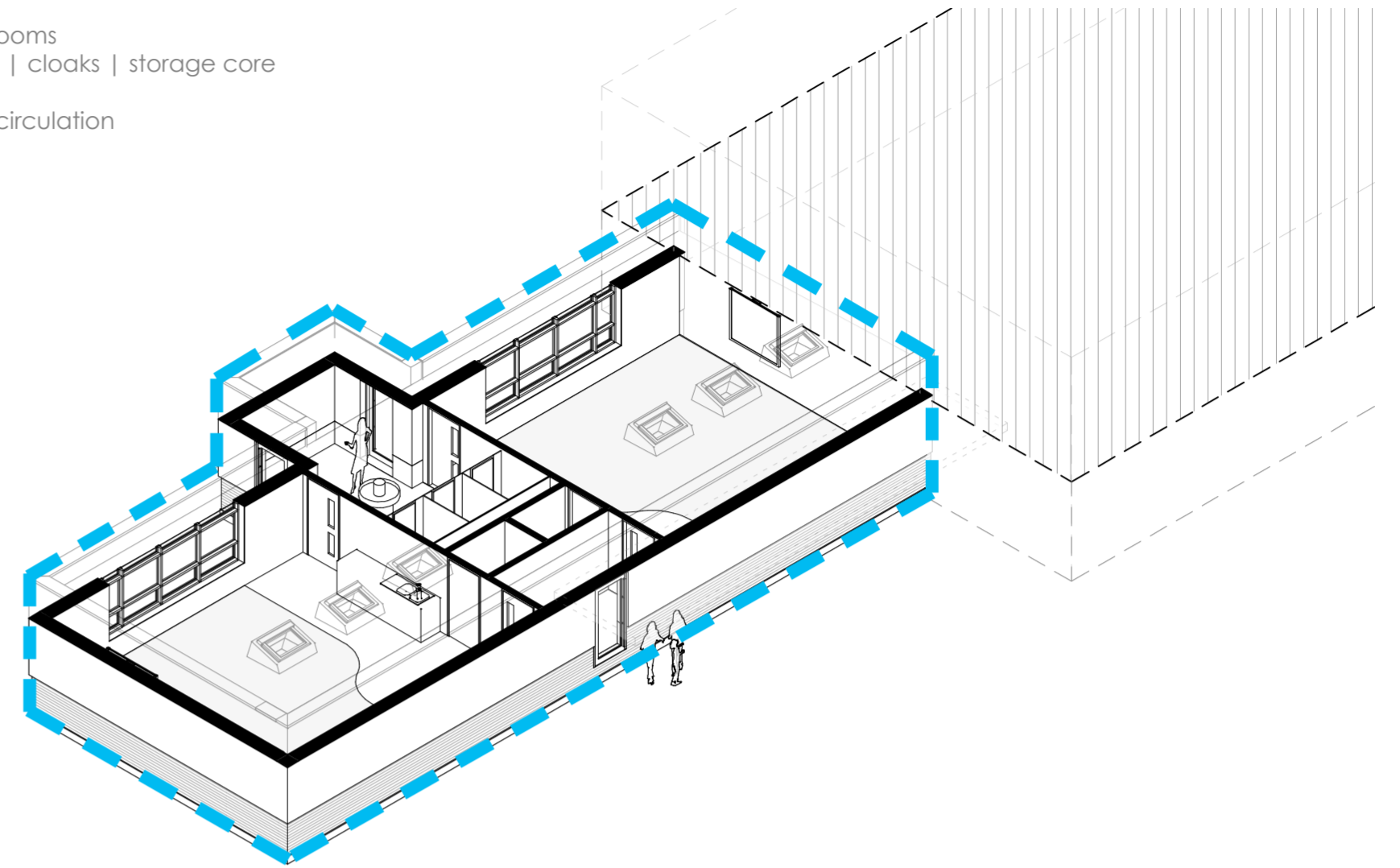
- 4 x classrooms
- 2 x specialist teaching rooms
- 2 x break-out spaces
- 2 x toilets | cloaks | storage cores





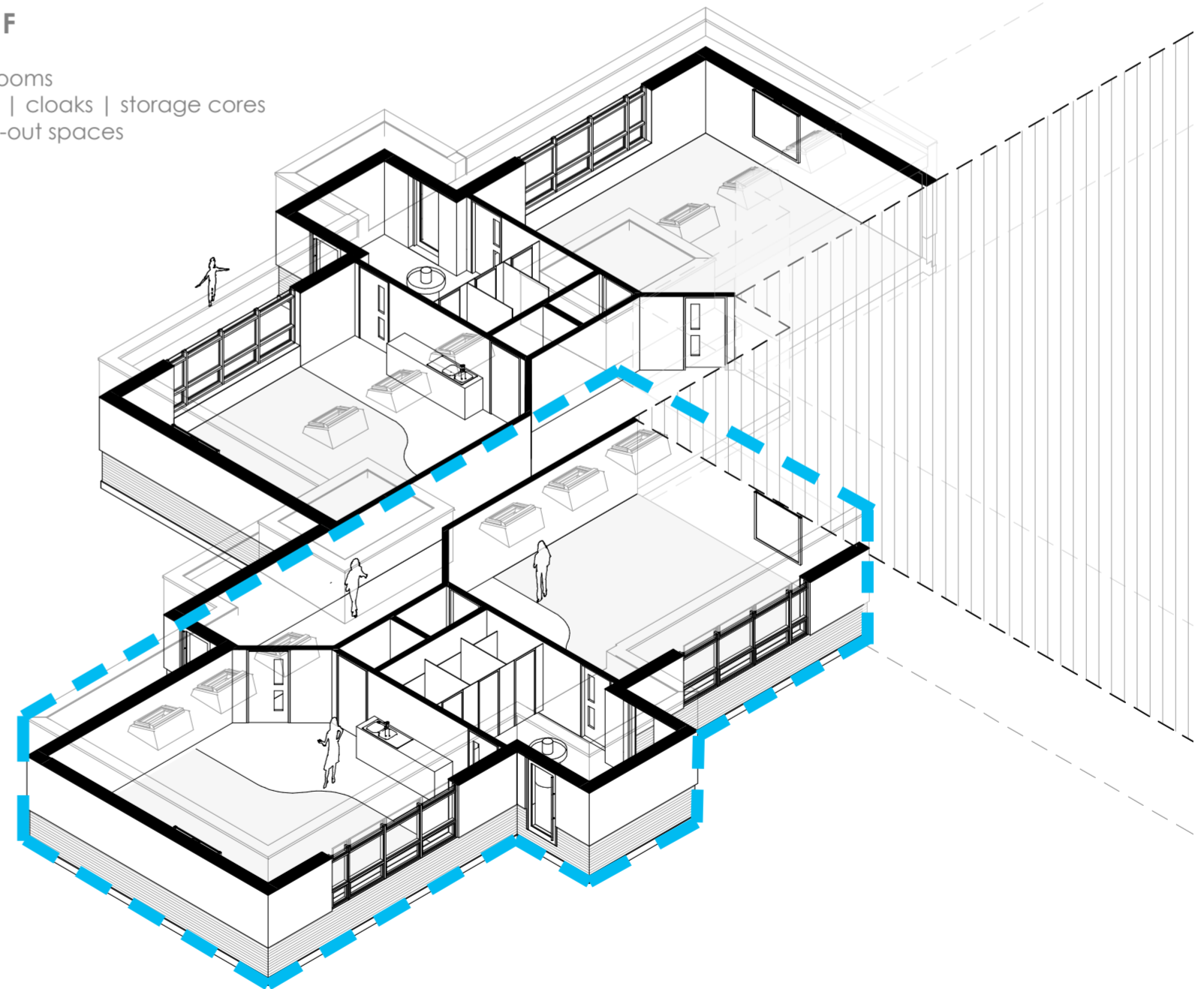
Option E

2 x classrooms
 1 x toilets | cloaks | storage core
 external circulation



Option F

4 x classrooms
 2 x toilets | cloaks | storage cores
 2 x break-out spaces





Oakham CofE Primary - classrooms | external solar shading



Axonometric - Option D indicative CGI



Perspective - Option D indicative CGI



Perspective - classroom indicative CGI



- Feature wall with double height graphic
- Picture signage denoting classes - alternative to numbering
- Roof light allows natural ventilation and light to flood into space below
- Downlight / Spots lights



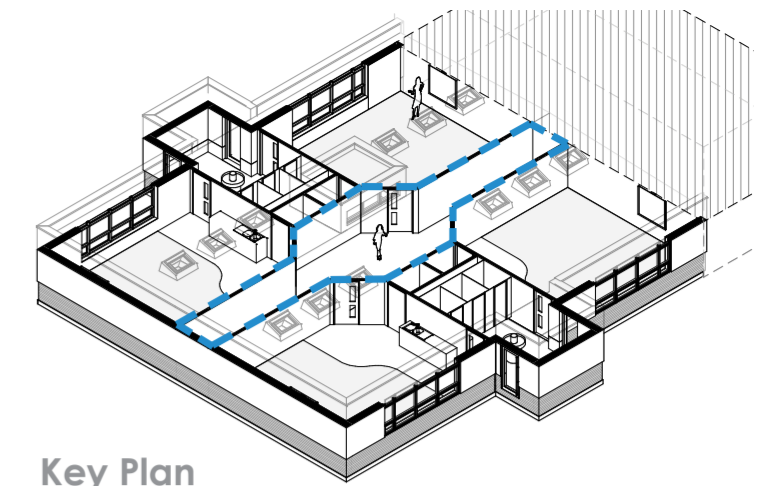
Nursery 3 - 6 yrs : Bright, colourful, vibrant and playful space



- Feature wall with double height graphic
- Over-sized feature signage denoting class room numbers
- Pinboards in corridor areas - can be plain colour or graphic imagery



Juniors 7 - 11 yrs : Adapted scheme for older age groups



Key Plan

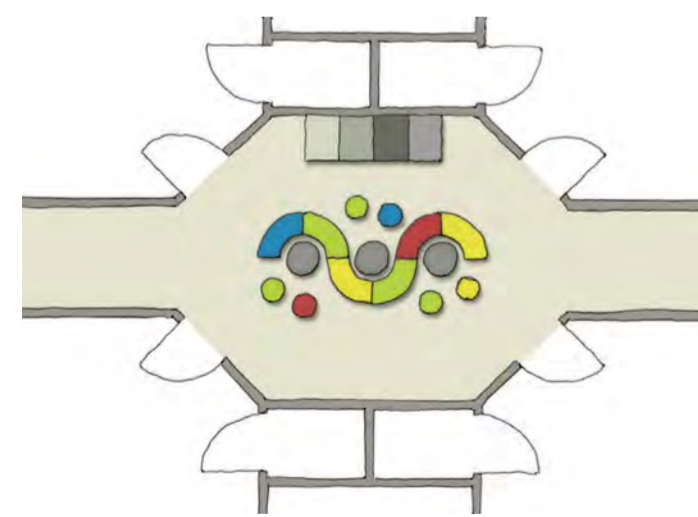
Stripes continue up wall surface

Unit (possibly bespoke) for furniture storage, opening up space for activities

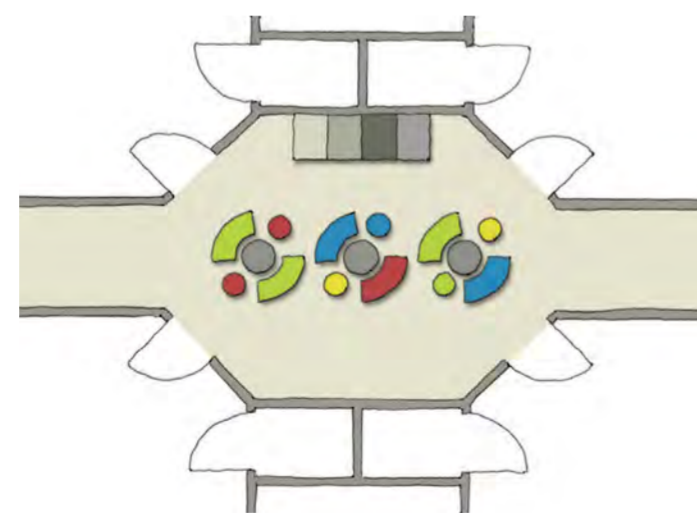
Furniture (possibly bespoke) to be re-configurable and height adjustable if applicable to accommodate different age groups and activities i.e one to one or group activities

Unit (possibly bespoke) for furniture storage, opening up space for activities

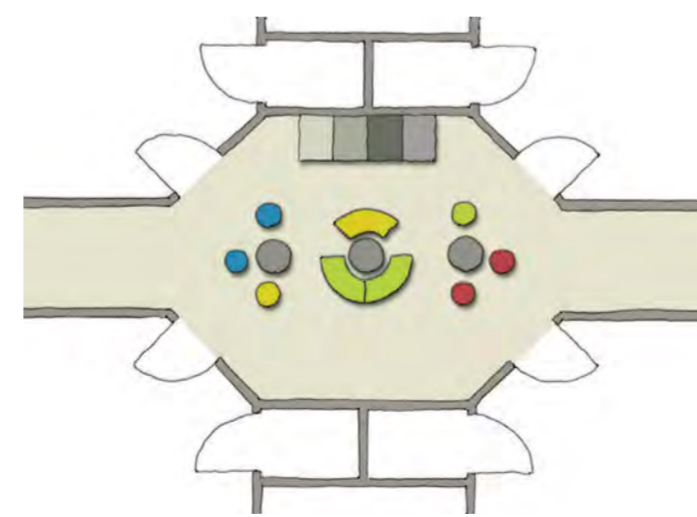
Note: Consideration to decoration may be required for children with SEN, such as Cognitive Impairment. Bold colours could have negative emotional side effects which may also effect educational performance. Creating neutral tonal zones may help in certain instances.



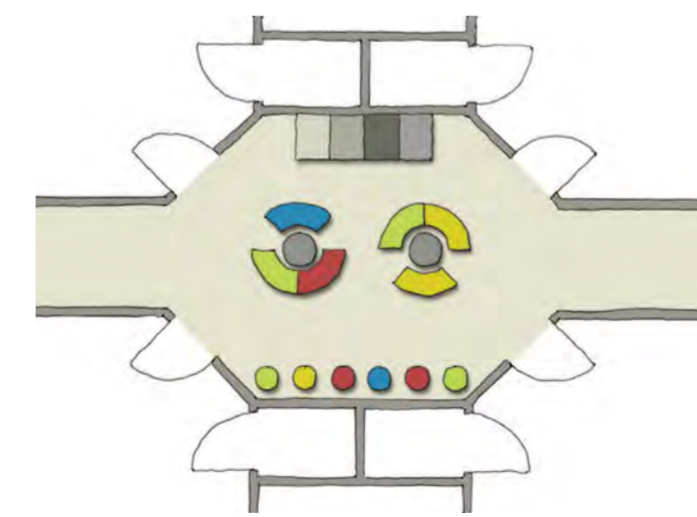
Layout Option 1



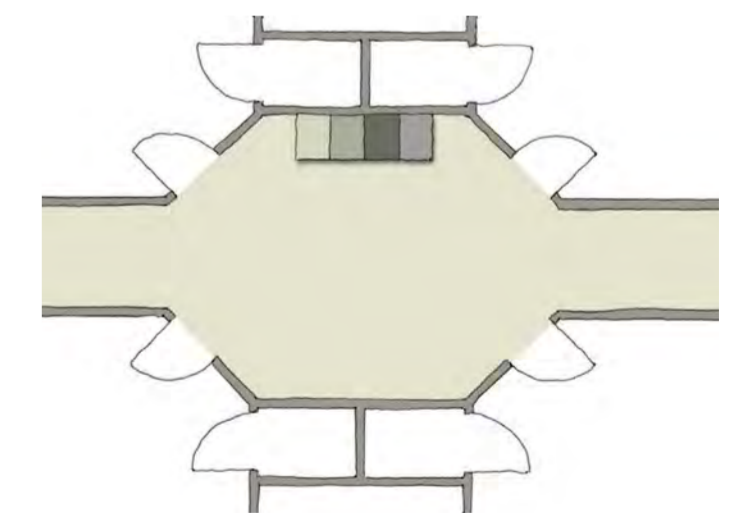
Layout Option 2



Layout Option 3



Layout Option 4



Layout Option 5